

INSTRUCTIONS FOR UPDATING THE eNet SERVER TO VERSION 2.0

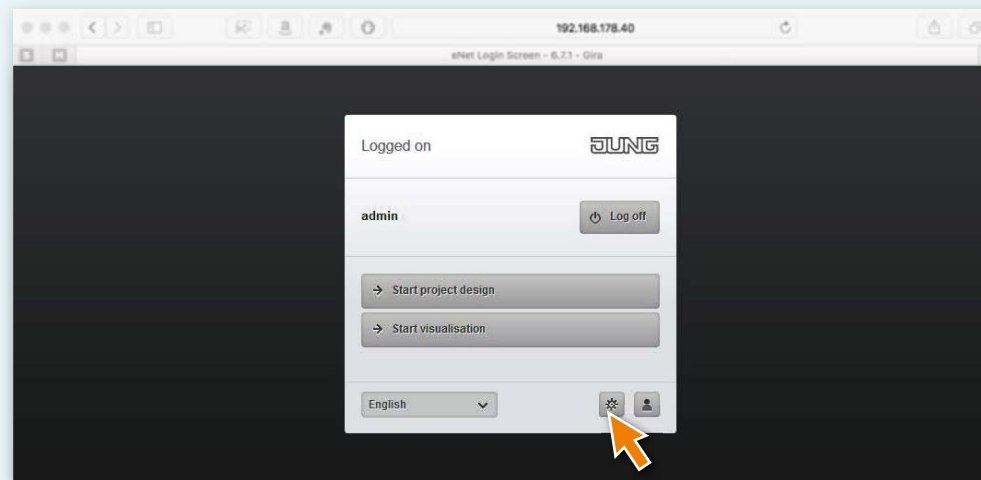
UPDATE INSTRUCTIONS FOR eNet SERVER

Prerequisites for updating to eNet server Version 2.0

- The eNet Server has firmware Version 1.3 or higher installed.
- All projects stored on the eNet server have been backed up on an external storage medium (e.g. USB flash drive).
- The eNet server time and date are correctly set and correspond to the time and date at the installation location.
- It is ensured that the power supply of the eNet server will not be cut off during the update process. Updating the eNet server to Version 2.0 takes approx. 10 – 45 minutes depending on the size of the project.
- The eNet SMART HOME app for Android or iOS is installed on the smartphone.

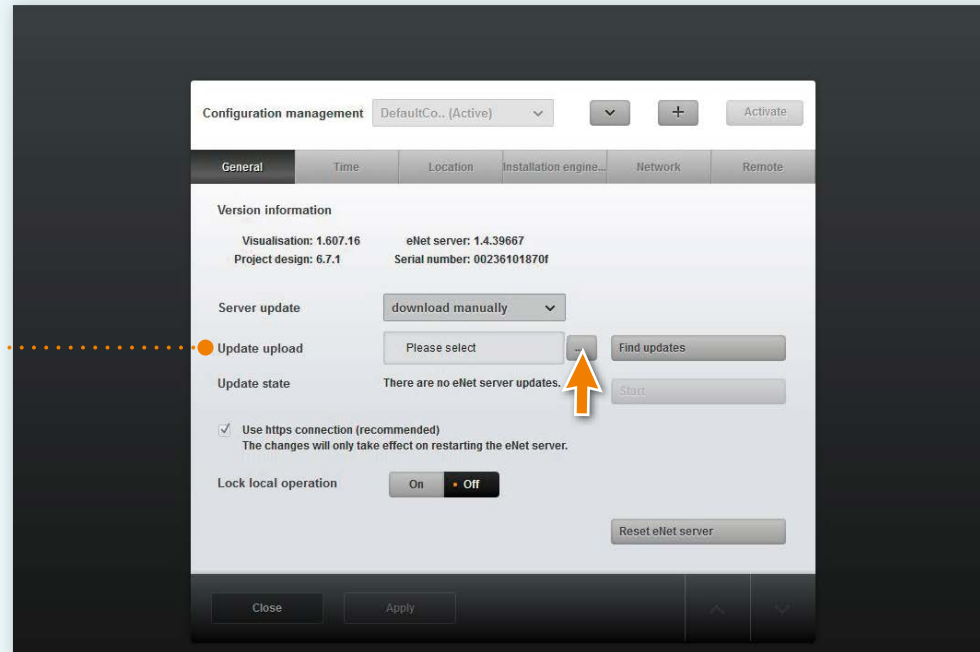
Carrying out the update to eNet server Version 2.0

1. Open the commissioning of the eNet server in your web browser and log on using your user data.
2. Switch to the "Configuration" view by clicking the **cog symbol**.

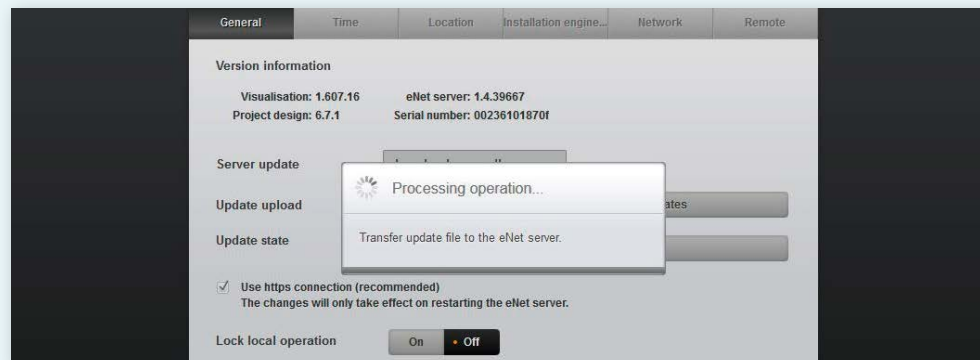


UPDATE INSTRUCTIONS FOR eNet SERVER

3. Upload the update file "eNetServer_2.0...iuf" to the eNet server by clicking the "..." button under **Update upload** and selecting the update file.

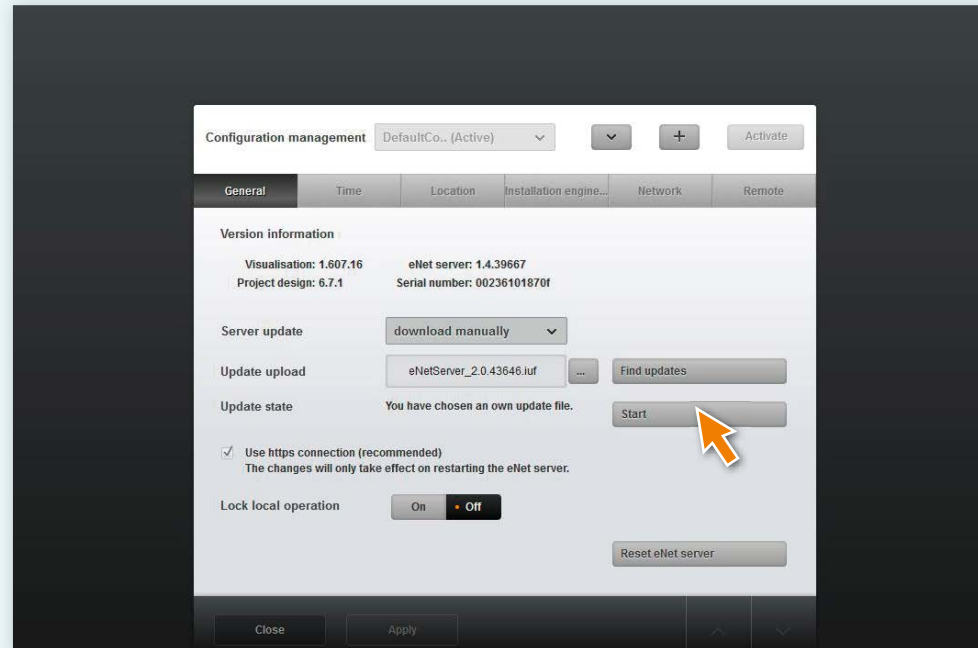


4. The following dialog is displayed:

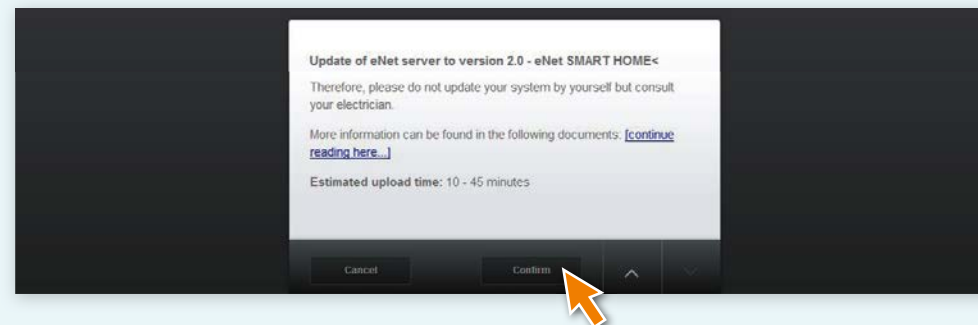


UPDATE INSTRUCTIONS FOR eNet SERVER

✓ The process is complete when the following is displayed.

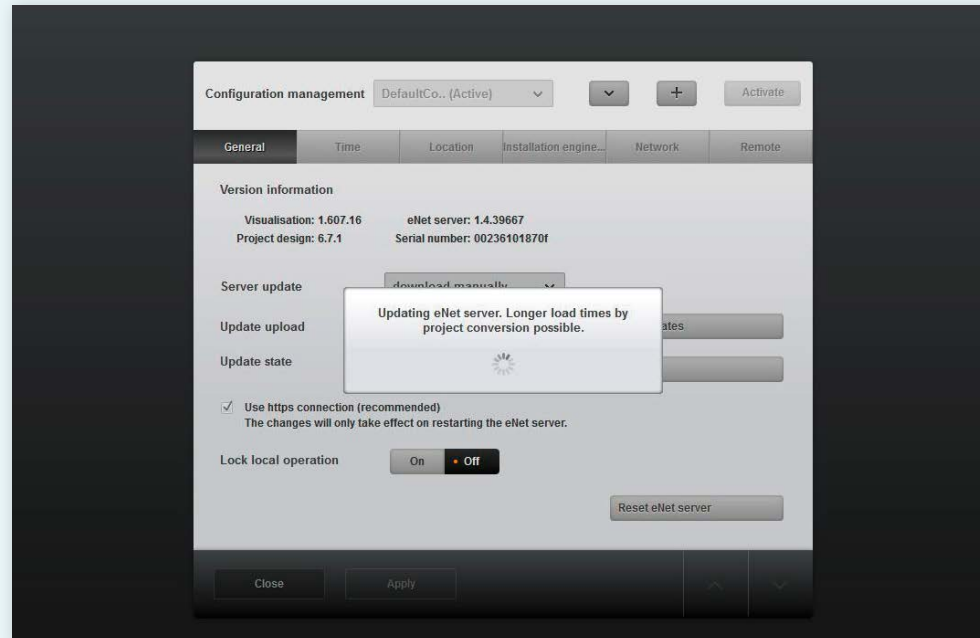


5. Start the update by clicking the **Start** button in the "Update state" row.
6. Click the **Confirm** button in the window "Update of eNet server to version 2.0 - eNet SMART HOME".
Take the information provided into account and read the document with care!



UPDATE INSTRUCTIONS FOR eNet SERVER

- The following message is now displayed: "Updating eNet server. Longer load times by project conversion possible."
The eNet server's power LED flashes.



✓ The update is complete when the eNet server's "power LED" stops flashing. No further notification is provided in the browser window.

✗ In case of errors, restart the process.

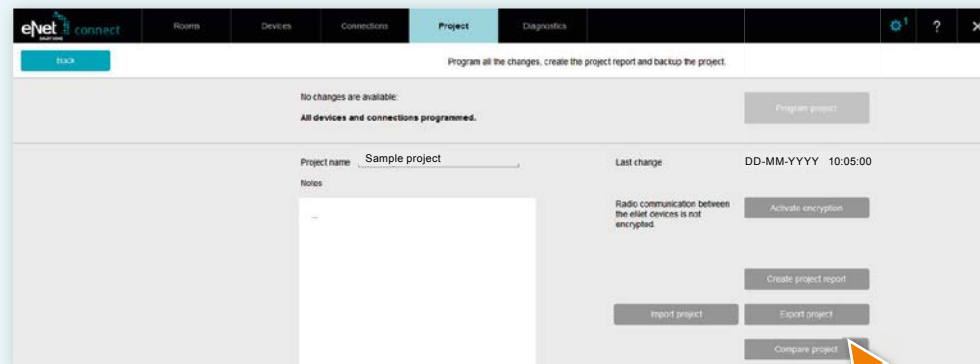
- Close the open window of the web browser in which you started the update.
- Delete the web browser history and restart it. If you don't know how to proceed, click the corresponding browser link below for help
 - [Mozilla Firefox](#)
 - [Google Chrome](#)
 - [Internet Explorer](#)
 - [Microsoft Edge](#)

UPDATE INSTRUCTIONS FOR eNet SERVER

10. Start the eNet SMART HOME app and select **Connect to eNet server**.
11. The logon dialog is displayed as well as the IP address of the eNet server.
12. Start commissioning of the eNet server again via your web browser by entering the IP address from the eNet SMART HOME app in the address line of the web browser.
 - ✓ Commissioning of the eNet server is now available and your eNet server is updated to the latest version.
 - ✗ In case of errors, proceed from Step 3.
13. Log on in the commissioning interface of the eNet server using your logon data.
14. Start commissioning by means of the button **Start commissioning**.
15. Check the existing building structure as well as the completeness of the devices and existing connections.
16. Open the **Project tab** and compare the project by selecting **Compare project**.
 - To perform a project comparison, click the **Project** button.



- Then click **Compare project** to start the comparison.



UPDATE INSTRUCTIONS FOR eNet SERVER

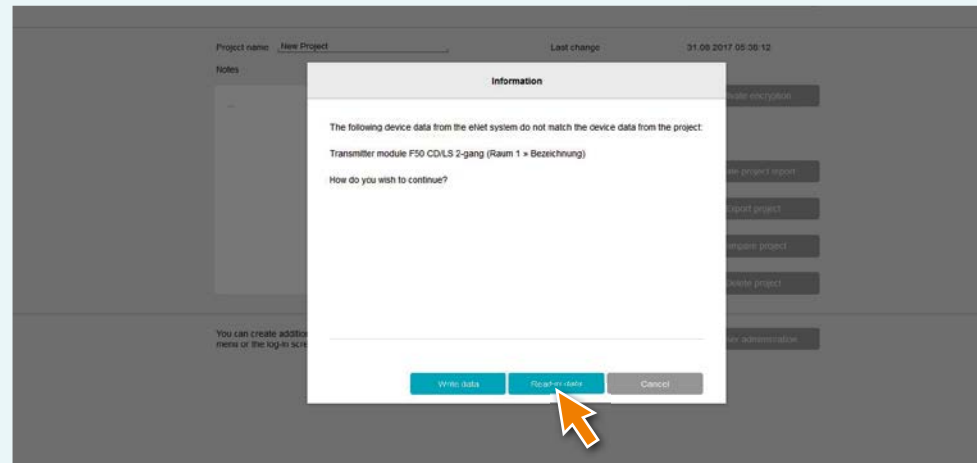
- The eNet server will now search for all devices in order to be able to read the device data. Battery-operated devices must be activated for this.



- After the eNet server has found all devices, you will see the following information if the project data of the eNet server matches the all device data.



- If the eNet server finds deviations, the following information is displayed.



- Click the button **Read-in data** so that deviating device data from manual commissioning will be used in the eNet server.

UPDATE INSTRUCTIONS FOR eNet SERVER

17. Then program the project by opening the **Project** tab and clicking **Program project**.

Note: eNet server update Version 2.0 contains further device updates for all eNet SMART HOME-enabled devices. An update of the devices is absolutely necessary in order to enable use of the full scope of functionality of the new eNet SMART HOME system.

In order to carry out the device updates, please use the PDF document "Instructions for updating eNet devices to Version 2.0", which you received with the download file of the eNet server update.

Gira

Giersiepen GmbH & Co. KG
Dahlienstrasse
P.O. Box 12 20
42477 Radevormwald
Germany
Tel. +49 21 95 602 0
Fax +49 21 95 602 191
www.gira.com
info@gira.com

Technical advice Gira
Tel +49 21 95 602 123
Fax +49 21 95 602 118
hotline@gira.com

JUNG

Albrecht Jung GmbH & Co. KG
Volmestraße 1
58569 Schalksmühle
Germany
Tel. +49 23 55 806 553
Fax +49 23 55 806 254
www.jung.de
international@jung.de

Technical advice Jung
Tel +49 23 55 806 555
Fax +49 23 55 806 255
international@jung.de

Insta GmbH

Hohe Steinert 10
P.O. Box 1830
58468 Lüdenscheid
Germany
Tel. +49 23 51 936 0
www.insta.de
info@insta.de

www.enet-smarthome.com